

2017

# EXCELLENCE IN CONCRETE & MASONRY DESIGN AND CONSTRUCTION AWARDS



## The 36th Annual Excellence in Concrete and Masonry Design and Construction Awards

The Minnesota Concrete & Masonry Contractors Association is proud to recognize and honor the efforts and collaboration of architects, engineers, contractors, and suppliers in the use of masonry and concrete in the construction of the structural elements and the decorative cladding on commercial and residential buildings and their surroundings. Masonry and concrete are versatile building materials that are both durable and beautiful. Thank you for your dedication, excellent craftsmanship, and continued use of masonry and concrete in your designs and projects. Together we can, and do, build the best buildings in the world!



— Christa Seaberg,  
MC&MCA President  
JE Dunn Construction







## Chaska Firemen's Park Curling and Event Center CHASKA, MN

Category  
Masonry Commercial  
Public Use

Owner  
City of Chaska

Architect/Designer  
292 Design Group

General Contractor  
Kraus-Anderson Construction  
Company

Masonry Contractor  
Crosstown Masonry, Incorporated

Category  
Masonry Commercial  
Decorative CMU, Structural or Veneer

Owner  
ISD #199

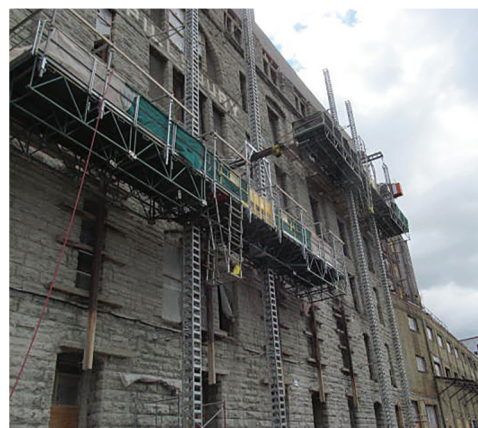
Architect/Designer  
Architects Rego + Youngquist, inc.

General Contractor  
Sheehy Construction Company

Masonry Contractor  
B & D Associates, Inc.



## Additions and Alterations to Simley High School INVER GROVE HEIGHTS, MN



## A-Mill Artist Lofts MINNEAPOLIS, MN

Category  
Masonry Restoration  
Residential & Commercial

Owner  
Dominium Management

Architect/Designer  
BKV Group

General Contractor  
Weis Builders

Masonry Restoration Contractor  
Advanced Masonry Restoration



Category  
Concrete Residential Decorative

Owner  
Bellerieve Development, Inc.

Architect/Designer  
Kevin MacDonald, PhD  
Beton Consulting Engineers, LLC

General Contractor  
Gresser Companies, Inc.

Concrete Contractor  
Gresser Companies, Inc.



## Bellerieve EDEN PRAIRIE, MN



## Mount Olivet Lutheran Church New Entrance MINNEAPOLIS, MN

Category  
Masonry Commercial  
Natural or Cultured Stone

Owner  
Mount Olivet Lutheran Church

Architect/Designer  
Paul Meyer Architects, Inc.

General Contractor  
Kraus-Anderson Construction  
Company

Masonry Contractor  
Donald R. Frantz Concrete  
Construction, LLC

Category  
Masonry Commercial  
Office & Retail

Owner  
Minnesota Historical Society

Architect/Designer  
Collaborative Design Group, Inc.

General Contractor  
Advanced Masonry Restoration

Masonry Contractor  
Advanced Masonry Restoration



## Buildings 17 and 18 Historic Fort Snelling SAINT PAUL, MN







## Muntz Residence

STILLWATER, MN

Category  
Masonry Residential & Mixed Use

Owner  
Mr. Ted Muntz

Architect/Designer  
Frank Lloyd Wright

General Contractor  
Advanced Masonry Restoration

Masonry Contractor  
Advanced Masonry Restoration

Category  
Concrete Commercial  
Functional & Industrial

Owner  
Ingredient Transport

Architect/Designer  
Stueve Construction LLC

General Contractor  
Stueve Construction LLC

Concrete Contractor  
Northland Concrete & Masonry  
Company, LLC



## Form-A-Feed Fertilizer Plant

SAINT PAUL, MN



## Minneapolis Federal Courthouse

MINNEAPOLIS, MN

Category  
Concrete Commercial  
Innovative & Decorative

Owner  
GSA PBS AMD –  
Northern Contracting Branch  
MN/WI Contracting Team

Architect/Designer  
General Services Administration  
Great Lakes

General Contractor  
Hamline Construction, Inc.

Concrete Contractor  
Bulach Custom Rock, LLC



1711 WEST COUNTY ROAD B  
SUITE 207 SOUTH  
ROSEVILLE, MN 55113  
651-293-0892  
[MCMCA.COM](http://MCMCA.COM)